

# Curriculum & Instruction Report

Jan. 23, 2023

Mid-Year Assessment Data





# NWEA

Our December test administration is our district's mid-year check in on student growth.

# Part 1: What is NWEA?

## NWEA is:

- \*A nationally normed measure of a student's academic growth over time.
- \*Focused on growth. Sets individual growth goals for students based on age, grade and historical performance.
- \*Adaptive: Test looks different for each student.
- \*Norm-referenced: Gives a ranking that compares students to a larger population.

## NWEA is not:

- \*A criterion referenced test: It does not measure the same skills for all students. It does not measure against a fixed set of criteria or standards for a specific grade level.
- \*MAP and ANet -- as well as most teacher-created and curriculum-based assessments -- are criterion referenced tests.

# Part 1: Why do we use NWEA at KCIA?

- **Measures individual student growth over time.**  
No matter where a student started, we can assess whether they are making more or less academic progress than the average student at their age and achievement level. *This is key for assessing our effectiveness is teaching students who are performing below grade level.*
- Allows our charter authorizer to measure the effectiveness of our academic program in a way that accounts for growth, rather than only relying on the criterion-referenced MAP test.



# How did we do?

56% of KCIA students will meet or exceed their growth target on the NWEA test.

## Schoolwide

Subject	2019-2020	2020-2021	2021-2022	Dec. 2022
Math	48%*	25%	43%	54%
Reading	49%*	27%	35%	48%
Science	49%*	45%	45%	54%

We are so close to meeting our strategic plan goal, and the percentage of students who met their individual growth targets is significantly higher than during the past two years. **Three** grade levels met the goal in reading and **five** met the goal in math!

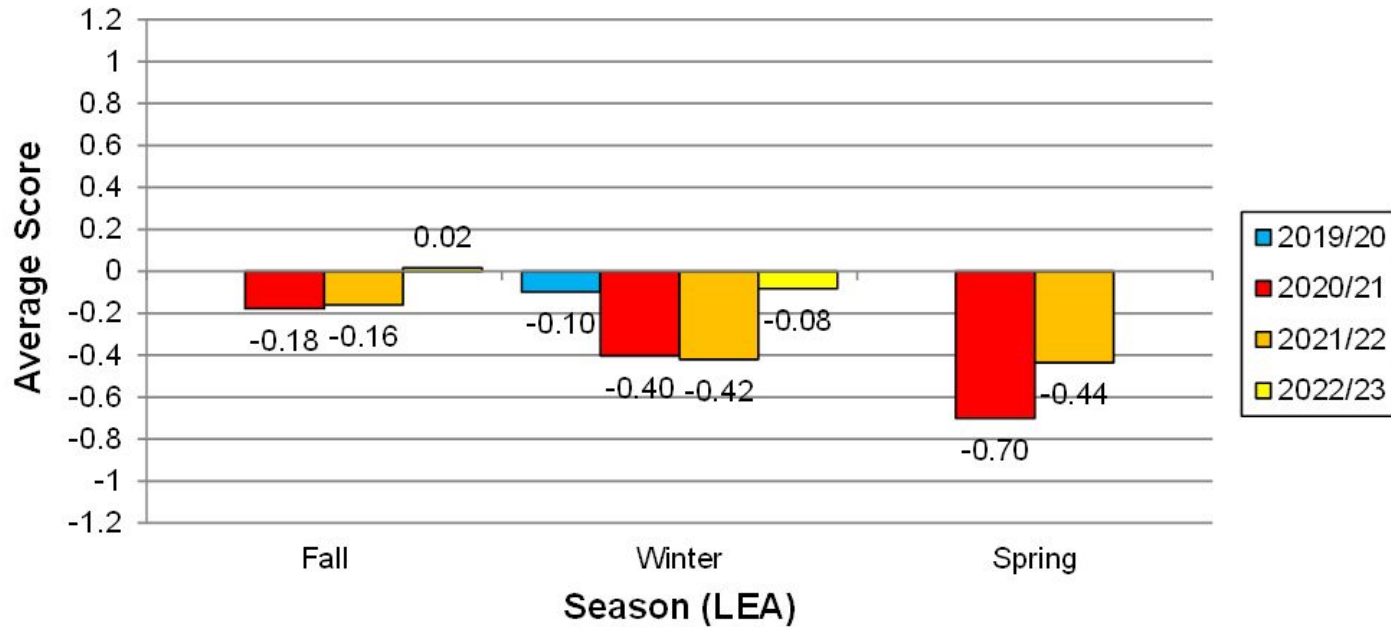


**1.**

# Reading

# Reading : Conditional Growth Index

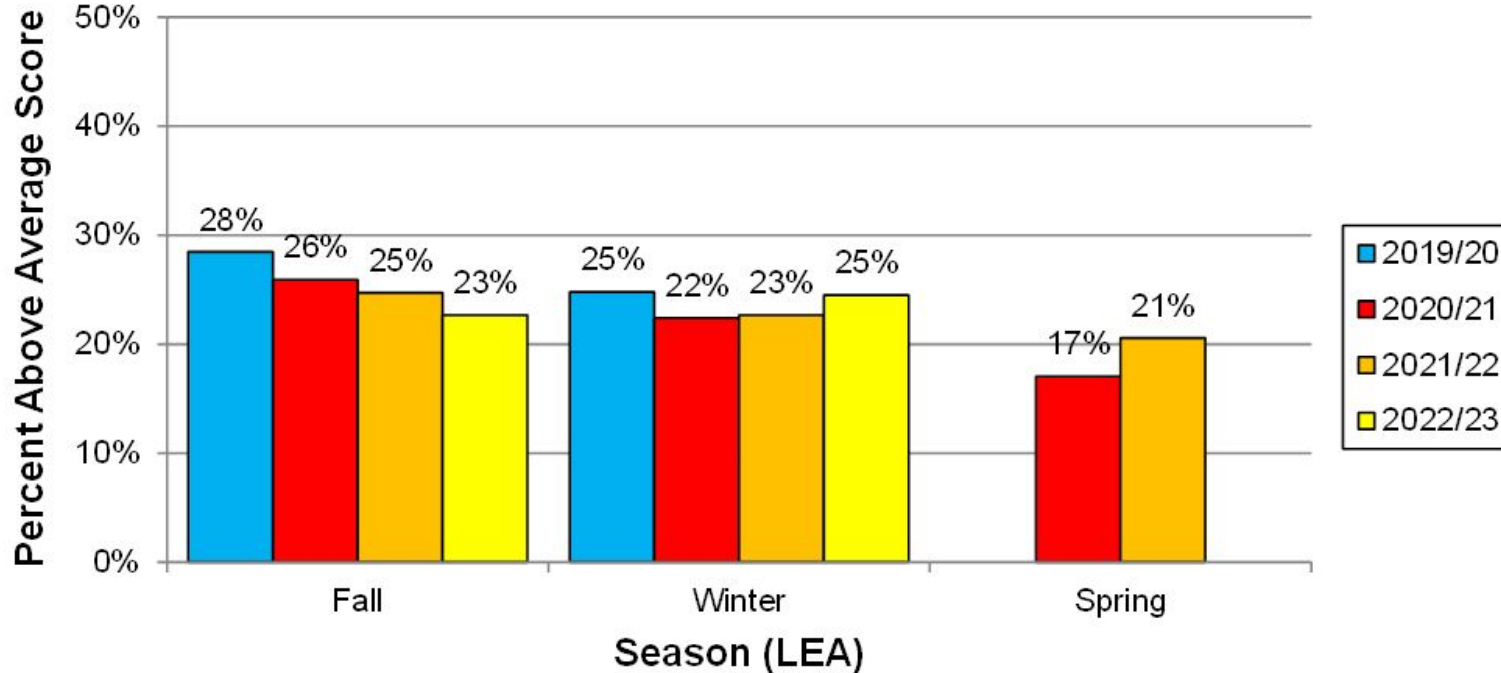
## Conditional Growth Index



- Number of standard deviations above or below typical growth
- Average is 0; CGI of 0.3 is one month of above average growth between the two tests
- Best measure of effectiveness per statistician

# Reading: Achievement Gap Closure

## Achievement Gap Closure



Percentage of students who tested at or above grade level



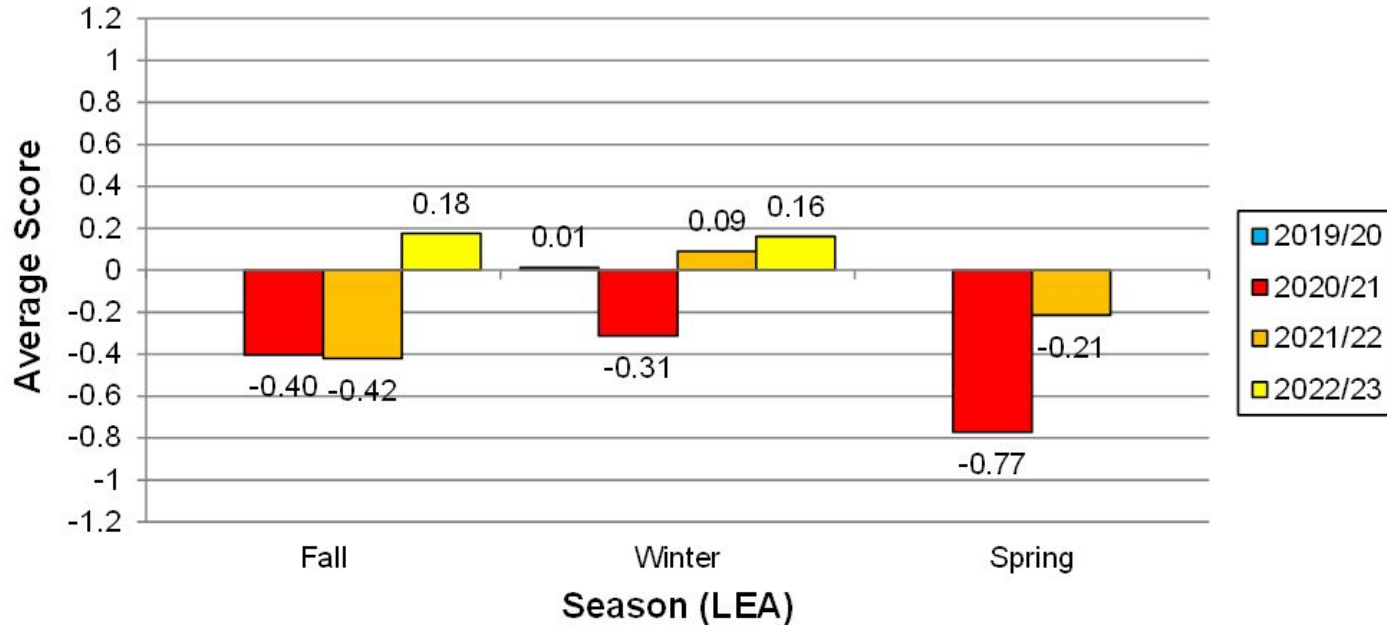


**2.**

**Math**

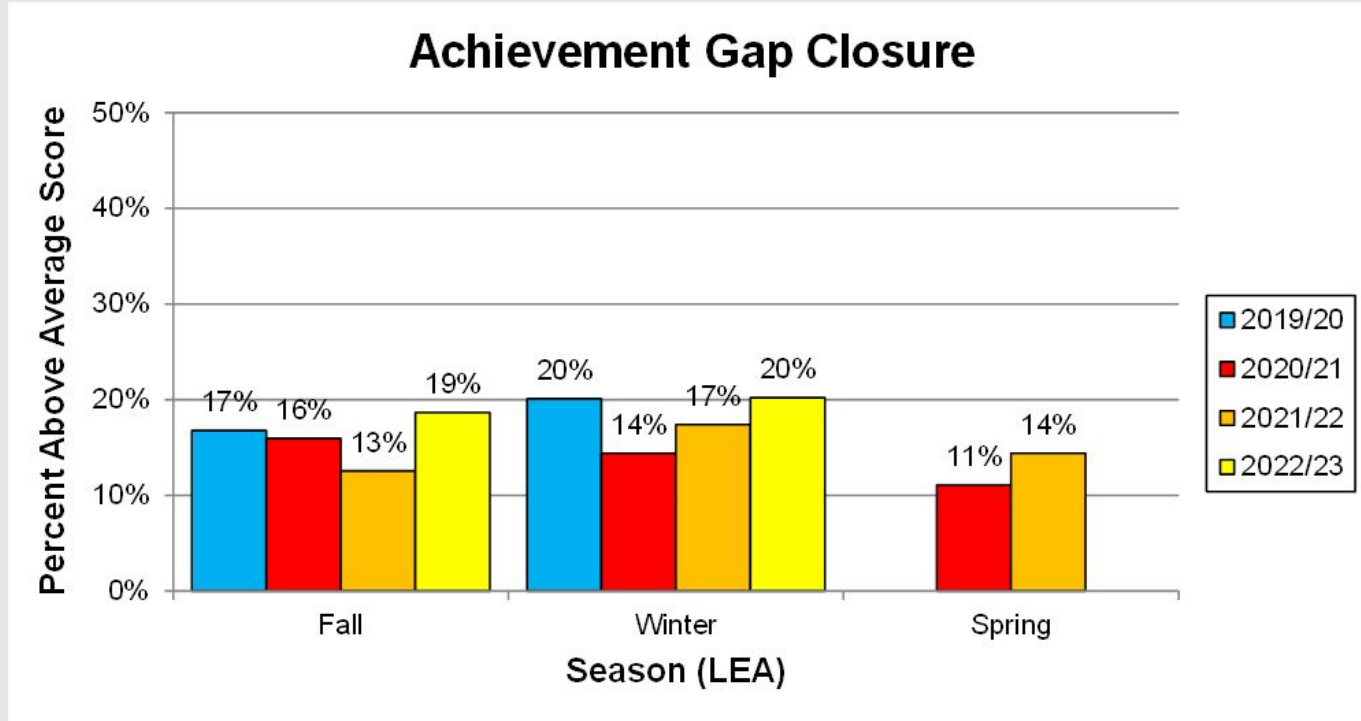
# Math: Conditional Growth Index

## Conditional Growth Index



- Number of standard deviations above or below typical growth
- Average is 0; CGI of 0.3 is one month of above average growth between the two tests
- Best measure of effectiveness per statistician

# Math: Achievement Gap Closure



Percentage of students who tested at or above grade level

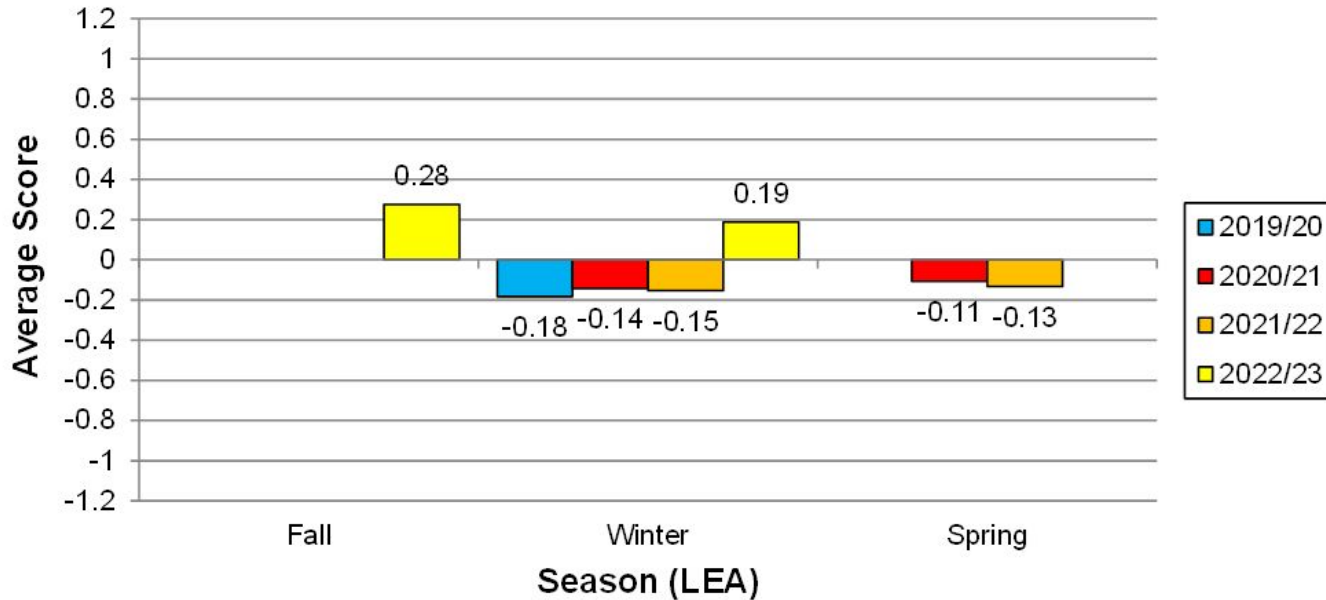


**3.**

**Science**

# Science: Conditional Growth Index

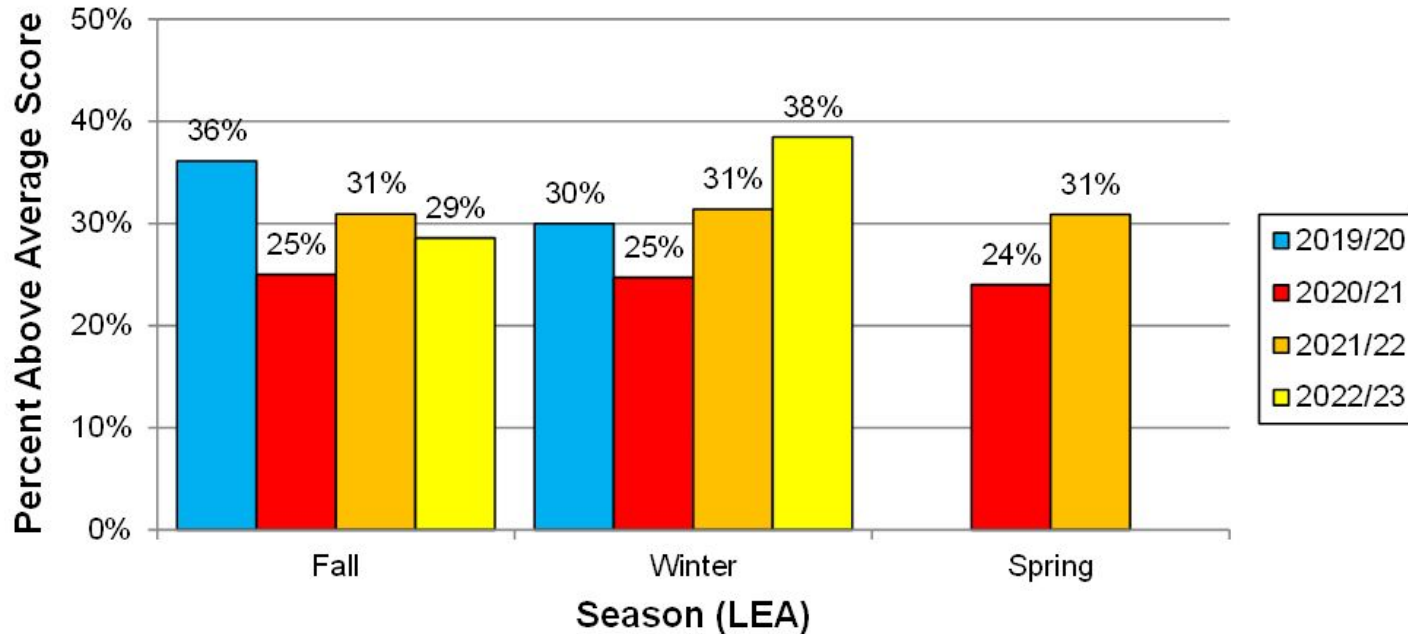
Conditional Growth Index



- Number of standard deviations above or below typical growth
- Average is 0; CGI of 0.3 is one month of above average growth between the two tests
- Best measure of effectiveness per statistician

# Science: Achievement Gap Closure

## Achievement Gap Closure



Percentage of students who tested at or above grade level

# Early Literacy Data

**50% of KCIA students in grades K-1 will meet the SIPPS grade-level phonics benchmark, based on the [placement assessment](#).**

K: Pass Beginning Level; 1st: Pass Extension Level

Fall 2022	Winter 2022	Spring 2023
20%	39%	
K: 32% 21/66 (Beginning 1)	K: 58% 38/66 (Beginning 21)	K: (Beginning 41/Extension R1)
1st: 10% 7/72 (Beginning 41/Extension R1)	1st: 21% 14/68 (Extension 1)	1st: (Challenge)

# EL Writing Assessment

September

January

3rd Grade

I remember (Net to a)

totter coo stier I wa2 coo adz I wa2 9 w

kom om and ad.

Now it's time to write! Use this space to write a clear and organized narrative about a memorable day in your life. Remember to tell your story with lots of details and interesting language. Be sure your story has a clear beginning, middle and end and is told in an order that makes sense.

When you are finished, be sure to check your writing. There is a checklist to help you on the last page.

I remember I cut my leg  
200 I wa2 walking in my room  
and I fall down on a sharp thing  
my leg got cut and I wa?  
200 adz what I went to the  
Ho2H2o an my mom and 212 came  
Wh2t me and my 212 help me  
I cry.


September

KCIA K-2 Writing Assessment Sep 2022

Now it's time to write!

Use words and pictures to tell about different jobs at your school. Explain why the work is important. Include as many details as you can. Make sure your writing has a beginning, middle and end.

88+



U

Raise my hand I see a bus, I see my teacher.

I job at school

bs 7777

see 7777 bs 7777

2nd Grade

January

Now it's time to write!

Use words and pictures to tell about different jobs at your school. Explain why the work is important. Include as many details as you can. Make sure your writing has a beginning, middle and end.

The bus he picks  
on the kids not the  
teacher. He helps  
the kids be ready  
they want to learn  
and be here. The  
bus helps realize  
they are careful to  
the kids on their bus.

Kids go to recess  
and their excited.

Put their careful  
to the kids.

The Bus he picks  
the kids not the  
teacher. He helps  
the kids be ready  
they want to learn  
and be here. The  
bus helps realize  
they are careful to  
the kids on their bus.

KCIA K-2 Writing Assessment Jan 2023 10/10/20

The - skv - ne - 15 - 120

hs - 22 NA M190b

is The WbEntC

The K1s go to 0 At +0

ATSA do we pt

ponch

The school here is  
the best school.  
The  
to eat  
lunch.





# Questions?

ANet Interim 2 data will be available next month. Testing is in progress.

